

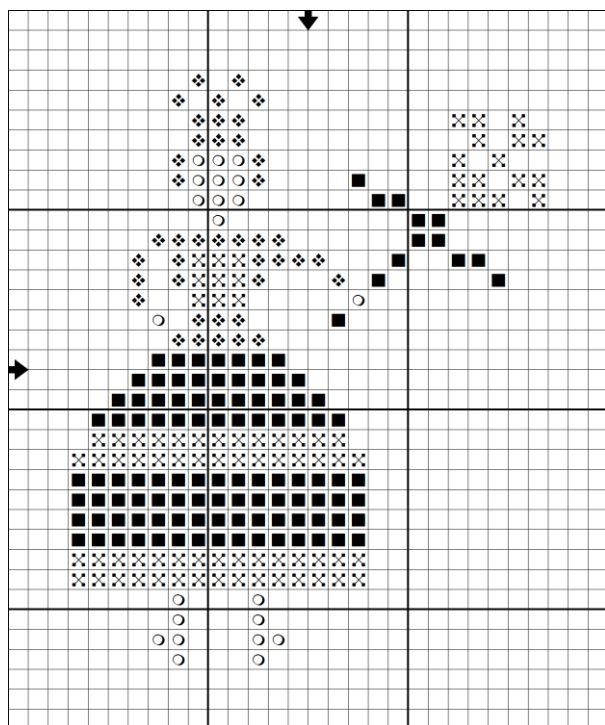
Wee Crowned Maiden

Free Design from Pineberry Lane ©2017

Stitch count: 24w x 30h (1 3/8" x 1 5/8")

Linen used for model: 36 count Lakeside Linen Vintage Light Exemplar

Symbol	Floss	Number	Color
❖	DMC	642	Beige Gray-DK
■	DMC	3787	Brown Gray-DK
✕	GA Shaker	7045	Mountain Mist
○	GA Shaker	7049	Lambswool



- All stitches are cross stitch.
- All stitches are worked with 1 strand of floss over 2 threads of linen.
- To finish into a pinkeep, center design on oval pattern template (sized for 36 count linen) and cut on solid line.
- Use oval pattern template to cut backing material.
- Lay needlework face down on material for back and pin.
- Hand or machine stitch ¼" seam allowance, leaving small opening for turning and stuffing.
- Turn right side out (hemostats are helpful here).
- Stuff with your choice of filling.
- Whip stitch opening closed.

